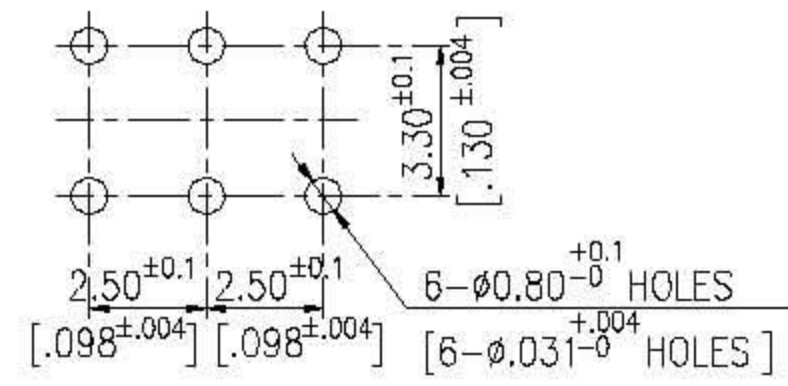
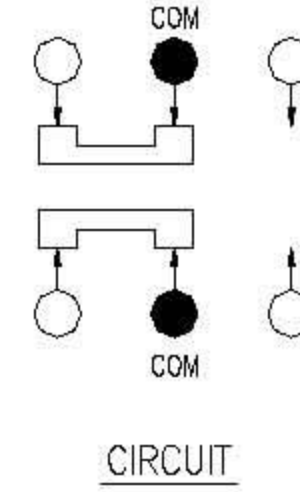
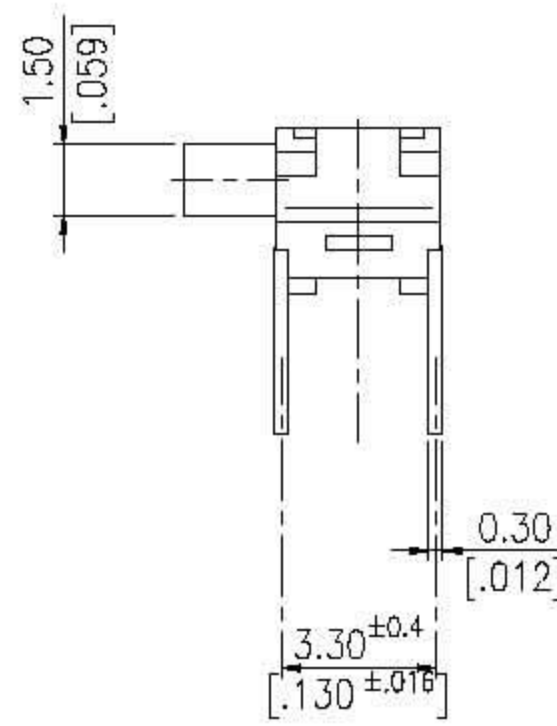
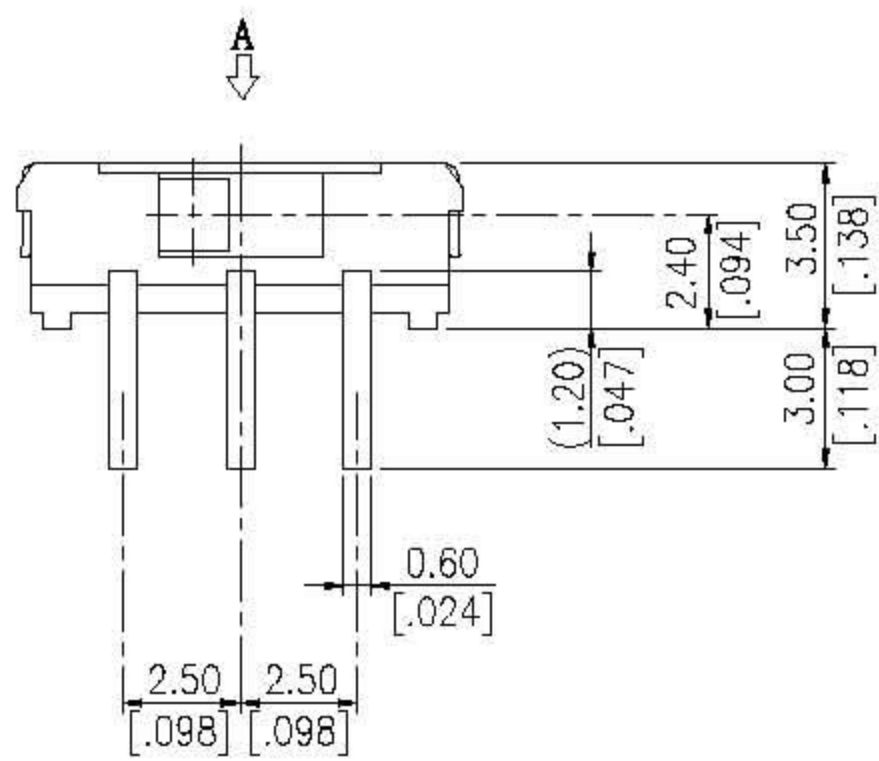
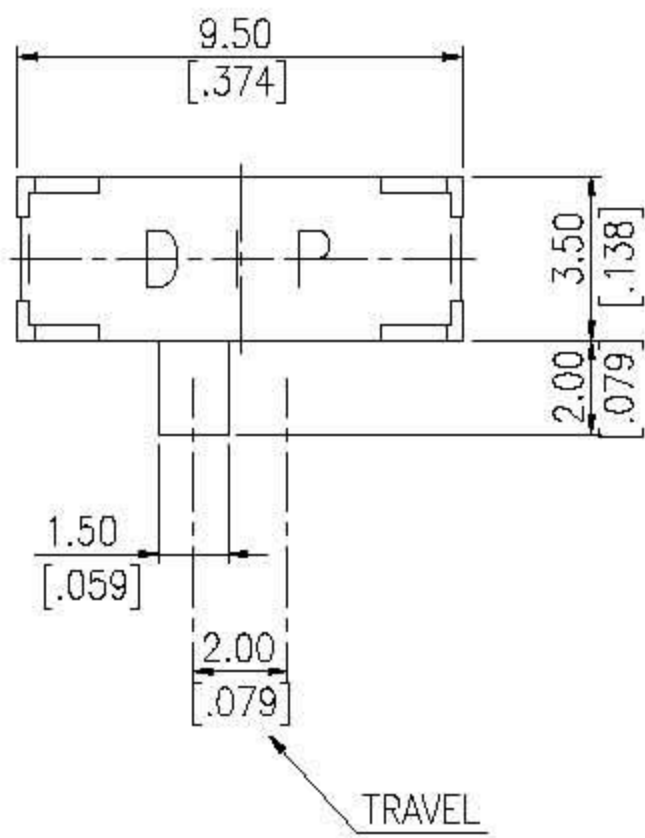


LSS SERIES



DIMENSIONS

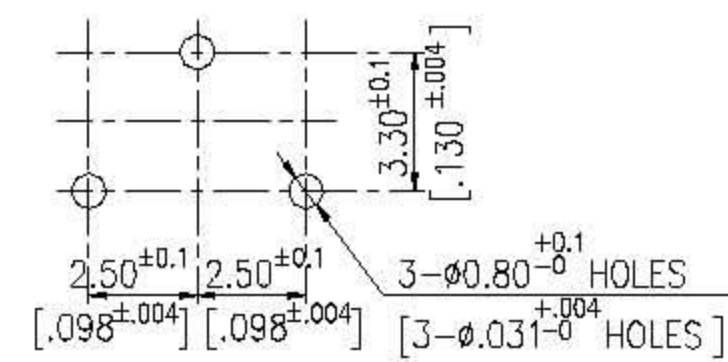
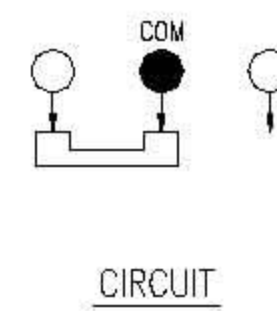
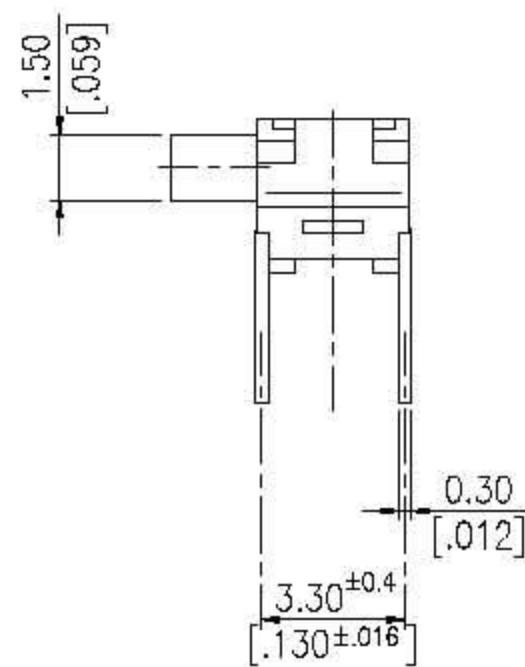
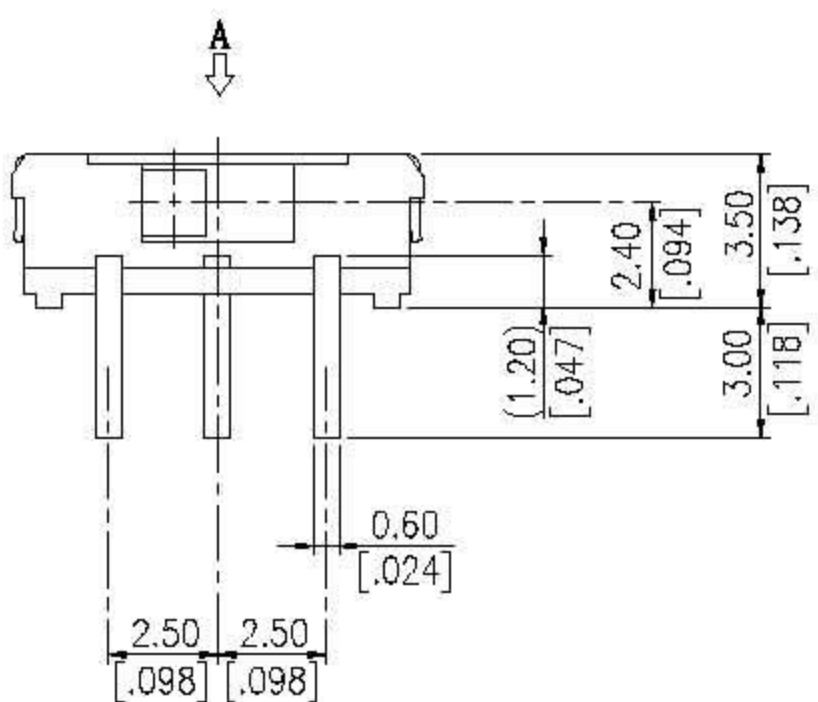
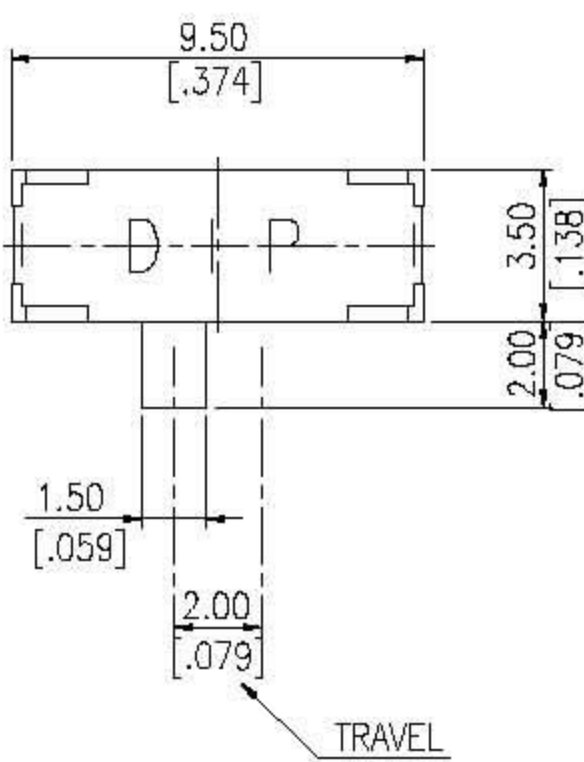
LSS22



P.C.B. LAYOUT
(VIEW FROM THE DIRECTION A)

General Tolerance : $\pm 0.2\text{mm}$

LSS12



P.C.B. LAYOUT
(VIEW FROM THE DIRECTION A)

General Tolerance : $\pm 0.2\text{mm}$

HOW TO ORDER

LSS - □ □ □ - V - □

Package Style :
□ = Bag
B = Tube
T/R = Tape & Reel
(Except LSS12、22(L)-V)

Soldering :
V = Lead Free Solderable

Terminal Length :
□ = 3.0mm
L = 2.50mm
M = 2.20mm
N = 1.80mm
P = 1.0mm
S = 0.9mm

Number Of Pin :
12 = 1P2T
22 = 2P2T

Large Sized Slide Switch

SPECIFICATION

△MECHANICAL

Operation Force: 200±150

Operation Temp: -10°C to +60°C

Storage Temp: -20°C to +70°C

Electrical : 10,000 cycles

Rating : 0.1 A, 12 VDC

△ELECTRICAL

Electrical Life: 10,000 cycles

Non-switching Rating: 100mA, 50VDC

Switching Rating: 25mA, 24 VDC

Contact Resistance: 100mΩ max.

Insulation Resistance: 100MΩ min. (500VDC)

Dielectric Strength: 500VAC/ 1minute

Circuit: 1P2T, 1P3T

MATERIAL

△COVER: Stainless steel

△BASE: LCP High-Temp thermoplastic

Color: Black

△ACTUATOR: LCP thermoplastic

Color: Black

△CONTACT: Alloy copper

△TERMINAL: Brass C2680-H

SOLDERING PROCESS

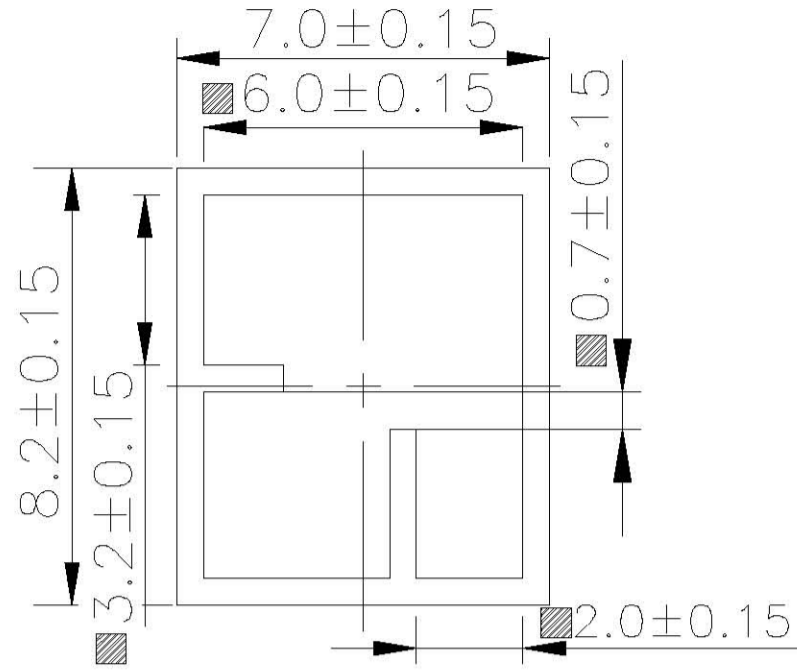
△HAND SOLDERING : Use a soldering iron of 30 watts, Controlled at 350°C approximately 5 seconds while applying solder.

△REFLOW SOLDERING : When applying reflow soldering, the peak temperature or the reflow oven should be set to 260°C max.

PACKING

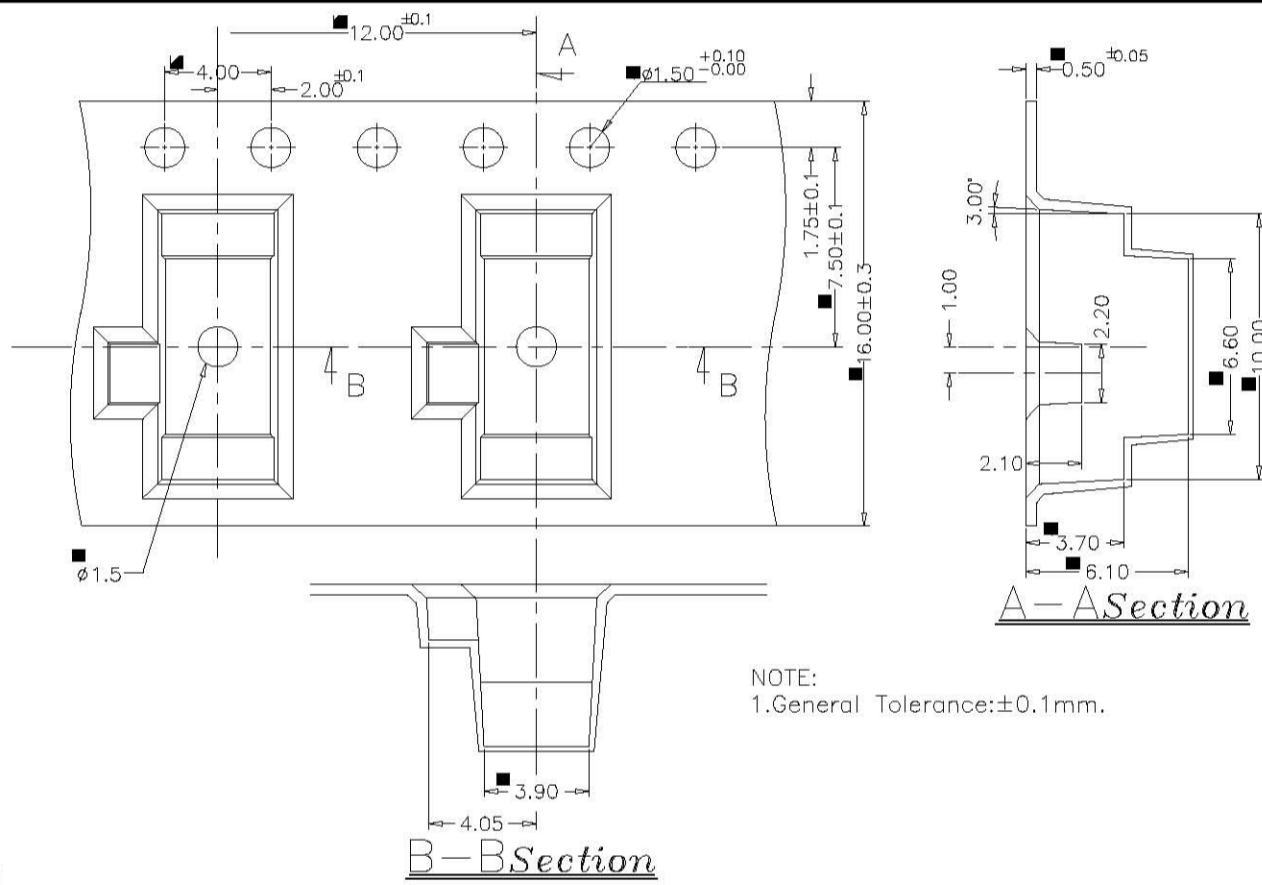
Part Number	Number Per Reel	Number Per Tube
LSS12、22	900	50

LSS TUBE



General Tolerance : $\pm 0.1\text{mm}$

LSS REEL



General Tolerance : $\pm 0.1\text{mm}$